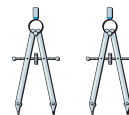




Get in Touch:
1.800.265.1985

Engineered Wood Solutions



| COMPONENTS | ECONOMY FLOOR | QUALITY FLOOR | QUALITY ^{PLUS} FLOOR |
|------------|---------------|---------------|-------------------------------|
| I-JOIST | X | X | X |
| LVL | X | X | X |
| RIMBOARD | X | X | X |
| HANGERS | | X | X |
| LSL | | | X |

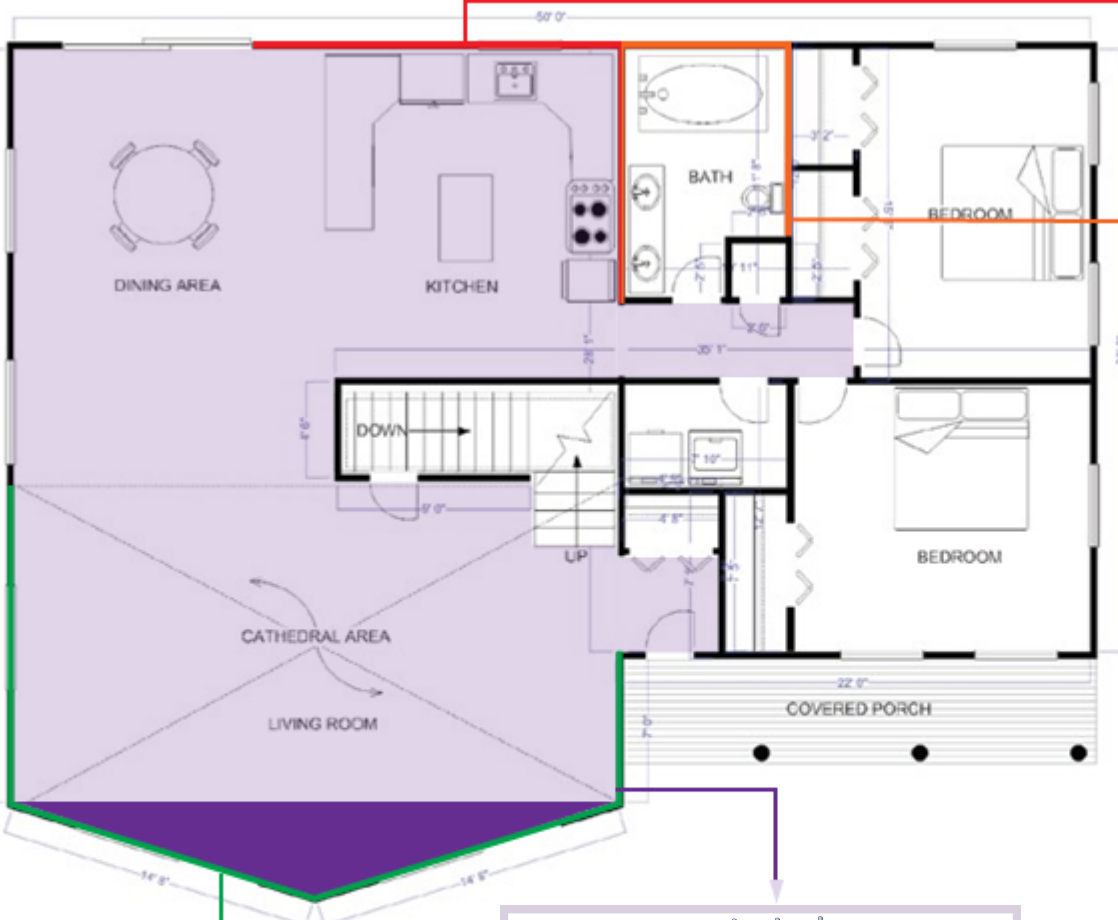
| ADVANTAGES | ECONOMY FLOOR | QUALITY FLOOR | QUALITY ^{PLUS} FLOOR |
|---------------|--------------------|------------------------------|--|
| VIBRATION | 99% OR BETTER | 87% OR BETTER | 87% OR BETTER |
| I-JOIST | BASIC JOIST SYSTEM | UPGRADED JOIST SYSTEM | UPGRADED JOIST SYSTEM |
| LSL | N/A | N/A | INSTALLED IN KITCHEN, BATHROOM, HALLWAY OR TALL WALL |
| TECH SERVICES | DESIGN SERVICE | ASSIGNED TECH SUPPORT PERSON | ASSIGNED TECH SUPPORT PERSON ASSIGNED TECH SALES REP |

Entry Level Track Builders
Budget Friendly Option
Price Conscious

Mid - High Level Track Builder
Custom Home Builder
Private Build

High Level Track Builder
Custom Home Builder
Private Build
Performance Conscious






LSL STUDS IN THE KITCHEN

- CABINETS AND COUNTER-TOPS ARE EASIER TO INSTALL
- STRAIGHTER THAN TRADITIONAL LUMBER
- STRAIGHTER WALLS MEAN LESS NEED TO SCRIBE OR SHIM CABINERY
- TILE BACK-SPLASH AND GYPSUM LESS LIKELY TO CRACK
- SIGNIFICANTLY REDUCES SCREW "POPS"



LSL STUDS IN THE BATHROOM

- CABINETS AND COUNTER-TOPS ARE EASIER TO INSTALL
- STRAIGHTER THEN TRADITIONAL LUMBER
- TILE AND GYPSUM LESS LIKELY TO CRACK
- SIGNIFICANTLY REDUCES SCREW "POPS"



QUALITY I-JOIST FLOOR

- EASIER INSTALLATION (FOR EVERYONE) - TRUE AND STRAIGHT - NO TWISTING, BOWING, CHECKING OR SPLITTING
- STIFFER FLOOR TO HELP REDUCE SQUEAKING
- LESS VIBRATION AND RATTLING OF CABINERY, DISHES ETC.



LSL TALL WALL ADVANTAGE

- UP TO 24' IN LENGTH
- EASIER INSTALLATION WITH CONTINUOUS 2-STORY CONSTRUCTION
- STRAIGHTER THROUGHOUT LENGTH
- ENGINEERED FOR PROJECT
- SIGNIFICANTLY REDUCES SCREW "POPS"



Get in Touch:
1.800.265.1985